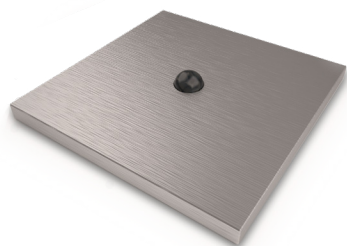


TENSE



KNX_MOTA

SPECIFICATIONS

Power supply: **min. 21 V DC max 31 V DC** supplied by the KNX bus line

Maximum power consumption: **120 mW**

Connection to bus: **2 x 1 mm pins for bus connecting terminal (TP1)**,
0.5mm² section

Operating temperatures: **-5 °C to +45 °C**

Maximum humidity: **93%** relative humidity, no moisture condensation

Type of protection (EN 60529): **IP20** (with front plate mounted)

Dimensions in mm (w x h x d): GLASS/STONE: **90 x 90 x 8 mm**

METAL/WOOD/CORIAN: **84 x 84 x 6 mm**

INSTALLATION HEIGHT

± DETECTION DIAMETER Ø

0.50 m	0.86 m
1.00 m	1.74 m
1.50 m	2.60 m
2.00 m	3.48 m
2.50 m	4.34 m
3.00 m	5.22 m
3.50 m	6.08 m
4.00 m	6.77 m
4.50 m	8.72 m

INSTALLATION INSTRUCTIONS:

1. **Remove power** from the KNX bus.
2. Connect the bus coupler with the KNX bus using the KNX TP1 bus connection terminal.
3. Connect the **red bus wire** to the red terminal (+) and the **black bus wire** to the black terminal(-).
4. Remove the front.
5. The bus coupler fits in a **standard single wallbox**. Use two flat headed screws to **fix the bus coupler**. Make sure the mounting is level and that the top ↑ marking on the PCB points upwards.
6. **Re-power** the KNX bus.
7. Press the programming button. Make sure the **red programming LED** lights up.
8. In ETS, add the device and **assign the physical address**.
9. **Program** the physical address. Make sure the red programming LED turns off.
10. **Plug the front** onto the bus coupler. Make sure that the "TOP ↑" marking on the PCB (backside of the front) points upwards.
11. In ETS, select the appropriate parameters and **assign the group addresses**.
12. **Download** the application program to the device.

MOTIVITY WALL



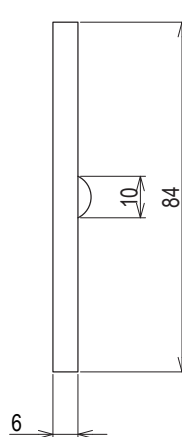
The Motivity Wall of Tense is a **motion detector** with **integrated temperature sensor**. With the internal sensor (or using an external one), the integrated thermostat can be used to **control the room temperature**.

Its output function and behaviour are **programmable** by setting the appropriate parameters in **ETS**. It supports **switching, dimming and setting scenes** for up to four selectable output blocks. Additionally it also has a **scene module, programmable logic ports, timer and up/down counter** functionality.

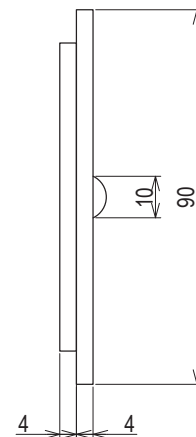
Mounted in the wall, this small sensor has a **360°** view, a minimal **angle of 82°** and a detection diameter as shown in the table on the left.

The detector is **installed in the wall** and comes in the same **finishes** as our Intensity switches and Infinity room controllers. The Motivity Wall can be installed on a regular **single British or European square or round wallbox**. The sensor is **surface mount**, but can be made **100% recessed** with the Trimless Wallbox delivered by Xillo®.

- The Motivity Wall has been equipped with an **infrared movement detector**.
- The detector has an internal **temperature sensor** with correction.
- Can make **light dependent decisions**.
- With the **master/slave mode** it is possible for the Motivity and other devices to control the action of the device programmed as master.
- Up to **four different output actions** available which can be independently activated on certain conditions. Possible output actions: **switching, dimming, recalling scenes, 1 or 2 Byte unsigned value, up/down,...**
- The Motivity Plus has been equipped with a **switch-off delay**.
- It is possible to **control your ventilation** through the Motivity Plus.
- **Blocking object**.



Metal Corian Wood



Glass Stone

ACCESSORIES:

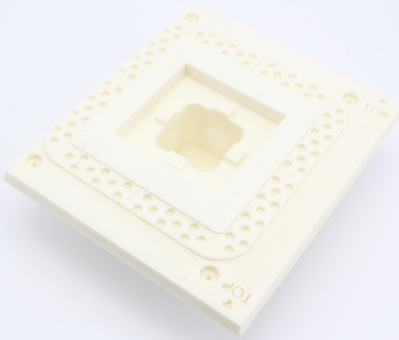
The Motivity Plus can be completed by using additional accessories.

TRIMLESS WALLBOX

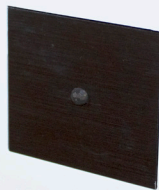
-TRIM_SWITCHMCMWINV124_BC (brick or concrete/metal, corian or wood)
-TRIM_SWITCHMCMWINV124_P (plasterboard/metal, corian or wood)
-TRIM_SWITCHG124_BC (brick or concrete/glass or stone)
-TRIM_SWITCHG124_P (plasterboard/glass or stone)

The sensor is surface mount, but can be **made 100% recessed** with the **Trimless Wallbox** delivered by Xillo®. The fixture is in one piece and completely made of the **solid patented composite**, so no need for an extra mounting kit. Easily install this wallbox in the wall thanks to the **pre-drilled holes**. The unique layered design and the handy indicators for laser positioning, make sure that every fixture is **easy to plaster**. In addition, the typical Xillo pattern and large mounting surface ensure that the plaster is always perfectly fixated. Finish it off the way you like.

See the **Trimless Switch Wallbox data sheet** for further information.



TRIM_SWITCHMCMW124INV



KNX_MOTAB & TRIM_SWITCHMCMW124INV

FINISHES

Aluminium:

Alu (brushed)	KNX_MOTA
Forged Alu	KNX_MOTFA
Alu Black (brushed)	KNX_MOTAB
Forged Alu Black	KNX_MOTFAB
Alu Dark Grey (brushed)	KNX_MOTADG
Forged Alu Dark Grey	KNX_MOTFADG
Alu White (RAL 9016)	KNX_MOTAW
Alu RAL (on request)	KNX_MOTARAL

Bronze:

Bronze	KNX_MOTB
Forged Bronze	KNX_MOTFB
Bronze Light	KNX_MOTBL
Forged Bronze Light	KNX_MOTFBL

Metal:

Chrome (polished)	KNX_MOTCH
Stainless Steel (brushed)	KNX_MOTSS
Forged Stainless Steel	KNX_MOTFSS
Forged Steel	KNX_MOTFS
Brushed Gold	KNX_MOTBG
Forged Gold	KNX_MOTFG
Brushed Copper Rose	KNX_MOTBCR
Forged Copper Rose	KNX_MOTFCR

Corian:

Corian Black	KNX_MOTCB
Corian White	KNX_MOTCW
Corian RAL	KNX_MOTCRAL

Glass:

Glass Black (RAL 9017)	KNX_MOTGB
Glass Silver (RAL 7001)	KNX_MOTGS
Glass White (RAL 9016)	KNX_MOTGW

Stone:

Belgian Blue	KNX_MOTSBB
Calacatta Marble	KNX_MOTSCM
Carrara Bianco Marble	KNX_MOTSCBM
Ceppo Di Gres Limestone	KNX_MOTSCDGL
Emperador Grey Marble	KNX_MOTSEGM
Emperador Marron Marble	KNX_MOTSEMM
French White	KNX_MOTSFW
Oak White Marble	KNX_MOTSOWM

Wood:

Afromosia	KNX_MOTWAF
Ash	KNX_MOTWAS
Oak Cotton White	KNX_MOTWOCW
Oak Dark	KNX_MOTWOD
Oak Pura Natura	KNX_MOTWOPN
Padouk	KNX_MOTWPA
Walnut	KNX_MOTWWA
Wenge	KNX_MOTWWE