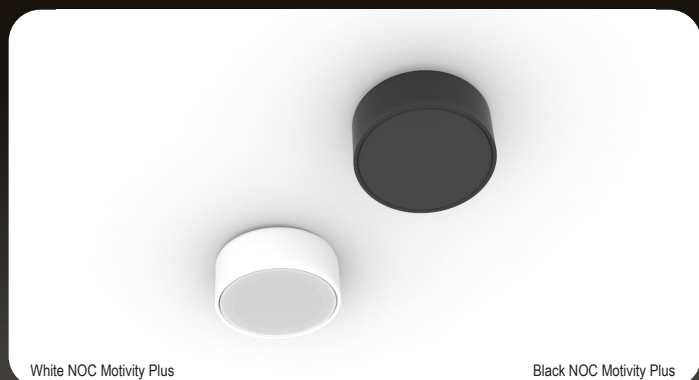


TENSE



White NOC Motivity Plus

Black NOC Motivity Plus

White NOC Motivity Plus Code: NOC_MOTPLUS_W Motion Detection	Black NOC Motivity Plus Code: NOC_MOTPLUS_B Motion Detection
---	---

SPECIFICATIONS

Power supply: **12 V DC**

Maximum power consumption: **[6 mA/12VDC (idle)] 25 mA/12 VDC (active)**

Connection: **normally open potential free contact**

Operating temperatures: **-5 °C to +45 °C**

Maximum humidity: **93% relative humidity**, no moisture condensation

Type of protection (EN 60529): **IP52** (installed in ceiling)

Dimensions in mm (w x h): **30 x Ø 73 mm**

INSTALLATION INSTRUCTIONS:

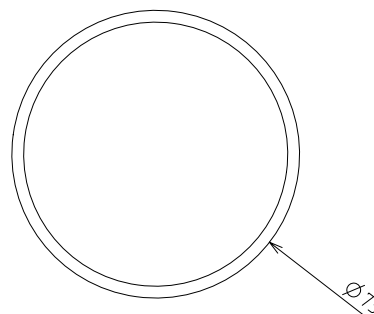
- Remove Power** from the system.
- Remove the backplate** of the Motivity fixture.
- Feed the wires** through the backplate.
- Insert the wires** by pushing on the **pressfit**: Insert the black wire in the 0V opening. Insert the red wire in the 12V opening and place the contact in the middle opening assigned with KK.
- Put the **backplate in place**.
- Mount the fixture** in its designated place.
- Repower** the system.

MOTIVITY PLUS

12 V
DC

The Motivity Plus is the surface-mount motion detector for **in- and outdoor** use. The Motivity Plus has a very **elegant design, no visible lens** and is **weatherproof**.

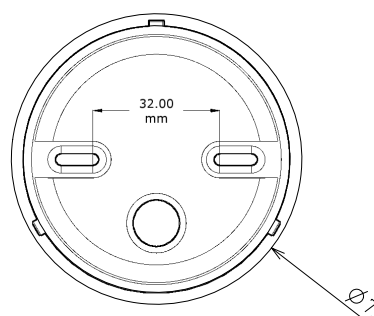
Mounted in the wall, this infrared movement sensor has a **360° view**, a minimal **angle of 92°** and a detection diameter shown in the table on the left hand side. The sensor is surface mount, but **can be made 100% recessed** with the Trimless Wallbox delivered by Xillo®.



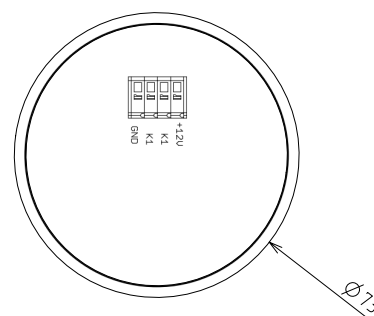
Drawing Front



Drawing Side



Drawing Back



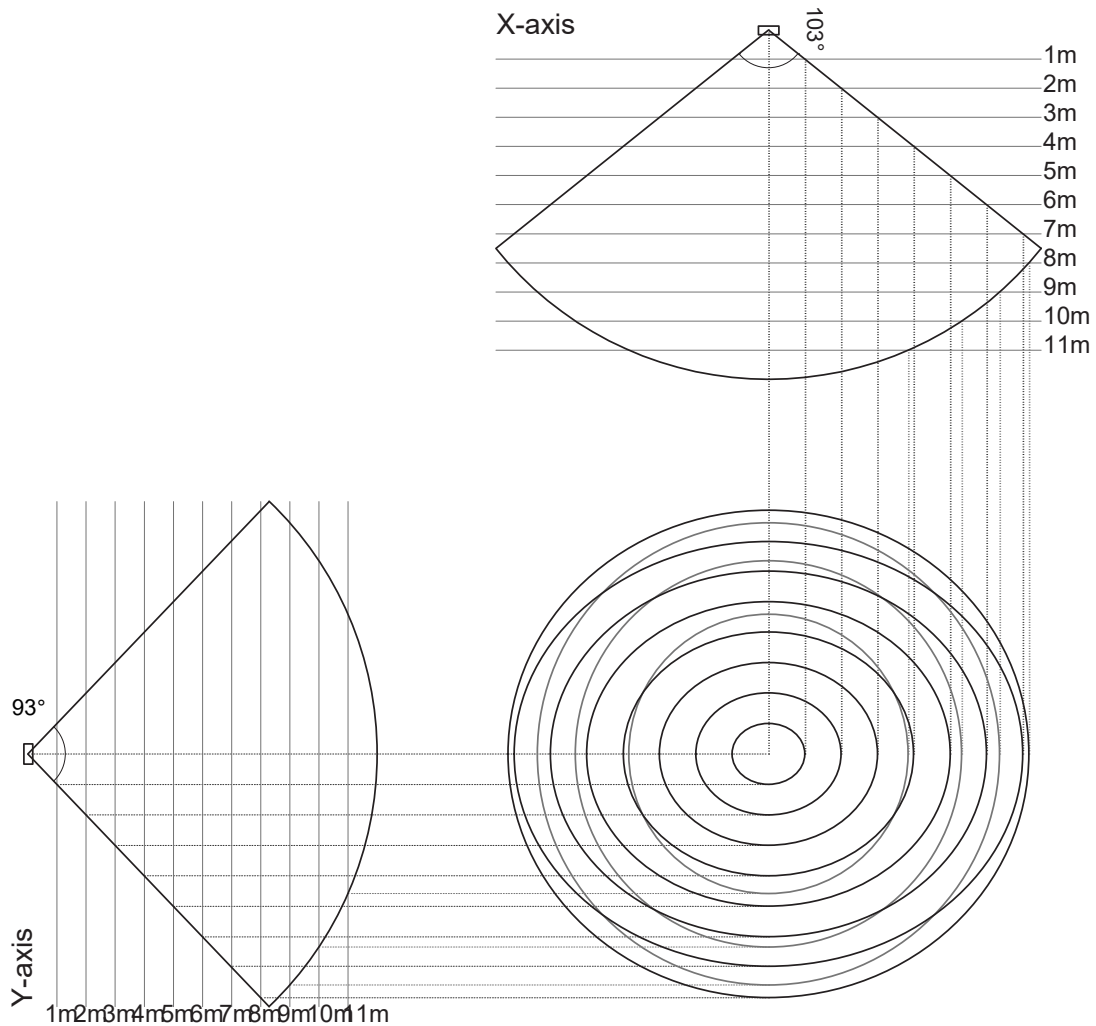
Drawing Back

PROJECTION ZONE

The Motivity Plus detects up until a distance of 12m. Absence or presence of detection cannot be guaranteed for a detection length of over 10m. Detection might thus occur over 10m. The projection zone of the Motivity Plus has an elliptical shape. The x-axis and y-axis have a different diameter. Below the projected detection zone per meter height is depicted both graphically and schematically.

INSTALLATION HEIGHT	ELEPTICAL AXIS X	ELEPTICAL AXIS Y
1.00 m	2.50 m	2.10 m
2.00 m	5.00 m	4.20 m
3.00 m	7.50 m	6.30 m
4.00 m	10.00 m	8.40 m
5.00 m	12.50 m	10.50 m
6.00 m	15.00 m	12.60 m
7.00 m	17.50 m	14.70 m
8.00 m	17.90 m	16.70 m
9.00 m	15.90 m	15.90 m
10.00m	13.30 m	13.30 m
11.00m	9.60 m	9.60 m

GRAPHICAL REPRESENTATION



ACCESSORIES:

The Motivity Plus can be completed by using additional accessories.

MOTPLUS ANGLE ACCESSORY

- MOTPLUSANGLE

With the **45° tilt** accessory a **narrower detection zone** and **smaller blind spot** is created when the Motivity Plus is installed on the wall with the aid of the **spacer**. The Motivity plus is **tilted 45°** causing the blind spot of the wall mounted Motivity Plus to be **reduced from 45° to 0°**.

See the **MotPlus Angle data sheet** for more information.



MOTPLUSANGLE & MOTPLUS_W

TRIMLESS WALLBOX

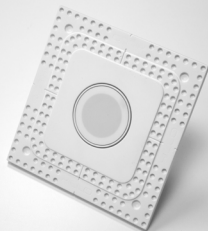
- TRIM_MOTPLUS_BC (brick/concrete)
- TRIM_MOTPLUS_P (plasterboard)

The sensor is surface mount, but can be made 100% **recessed** with the **Trimless Wallbox** delivered by Xillo®. The fixture is in one piece and completely made of the **solid patented composite**, so no need for an extra mounting kit. Easily install this wallbox in the ceiling or wall thanks to the **pre-drilled holes**. The unique layered design and the handy indicators for laser positioning, make sure that every fixture is **easy to plaster**. In addition, the typical Xillo pattern and large mounting surface ensure that the plaster is always **perfectly fixated**.

See the **Trimless MotPlus wallbox data sheet** for more information.



TRIM_MOTPLUS & MOTPLUS_W



TRIM_MOTPLUS & MOTPLUS_W