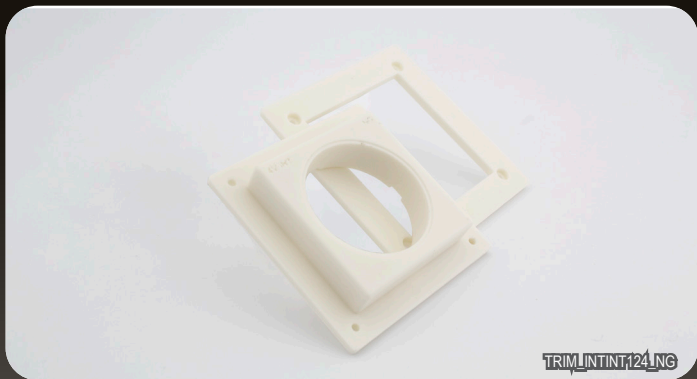


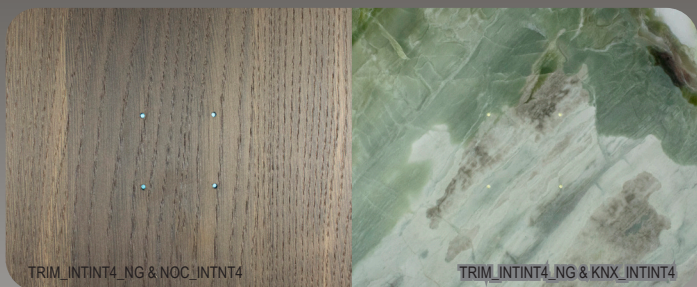
TENSE



TRIM_INTINT4_124_NG

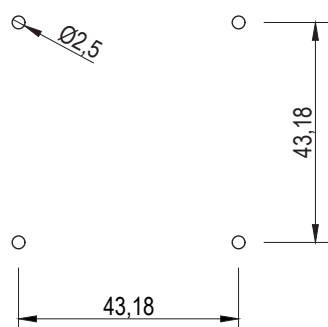
SPECIFICATIONS

Material: Patented Composite
 Type of protection (EN 60529): **IP20** (with front plate mounted)
 Operating temperatures: **-10°C to +45 °C**
 Dimensions visible : **45 x 45 mm**
 Dimensions wallbox: **125 x 125 x 22.9mm**



TRIM_INTINT4_NG & NOC_INTINT4

TRIM_INTINT4_NG & KNX_INTINT4



Drawing Intensity Integrated front

INTENSITY INTEGRATED WALLBOX NO GAP



Tense **Intensity Integrated** Wallbox No Gap (NG) is a **special wallbox made with the patented Xillo® material. It allows you to have a perfect 100% integrated solution for your Tense Intensity switch.**

With the Intensity Integrated Wallbox NG the Tense Intensity's electronics can be placed behind a **glass, Corian®, stone, ceramic or wooden wall**. The sensitivity of the electronics, which are installed behind the material, depends on the characteristics of said material. Therefore, stone, mirror or metal finishes with many metal particles inside might give touch issues. We thus advise to not use any of the aforementioned materials in our products. Please note that the Intensity Integrated Electronics have to be ordered separately.

The Intensity Integrated Wallbox WG combined with the Tense Intensity Integrated electronics result in a 100% integrated capacitive touch based switch. The switch has **4 touch zones** with individual **RGB LED feedback** coming from 4 small LED holes in the wall's finish. These drilled holes can be left as they are, or can be filled with transparent epoxy resin if preferred.

With our Tense wallboxes we offer you an **all-in-one solution**. The fitting, fixture and switch are all combined and made of the solid **patented composite**, so no need for an extra mounting kit. Thanks to the **strength** of this **material**, we don't have to work with any metal frame. The **Integrated NG Wallbox** by Xillo® meets the highest finishing standards and is suitable for all surfaces. The wallbox can be placed without spacers behind any panel of a thickness from **18mm up to 22mm**. When thicker panels are used, spacers will need to be installed.

Do not install the Xillo fixture above heating, fire place, airconditioning unit, in direct sunshine, poolhouses, garden pavilions or exterior applications.

Please note that the Intensity Integrated electronics have to be **ordered separately. Compatible with: KNX_INTINT4 or NOC_INTINT4.**

ACCESSORIES

To ensure easy installation of your Intensity Integrated No Gap, a **Trimless Kit** (TRIM_KIT) is included with each TRIM_INTINT wallbox. Please do not throw away the Trimless Kit. Save it for the moment you want to uninstall or reinstall the switch!

The trimless kit includes:

REMOVAL CLIPS

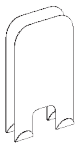
1 x TRIM_KEY (Trimless Key)

To easily **remove the front plate** of the Intensity or Socket, removal clips are available. Just **hook these 2 clips** behind the switch at both sides and **pull** both clips at the same time.

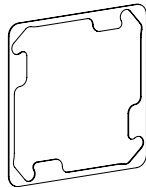
SPACERS

3 x TRIM_SPACER05 (Trimless Spacer 0,5 mm),
1 x TRIM_SPACER2 (Trimless Spacer 2 mm)

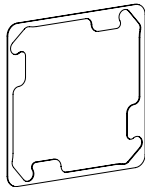
To obtain the **perfect end result** there might be some levelling of the products necessary. Use the spacers to **level** the recessed products with the wall after painting. The **spacers** are placed **behind the BCU**.



REMOVAL CLIPS



SPACER 2 MM



SPACER 0,5 MM

DISCLAIMER: PROJECT PROTECTION REQUIRED

The Integrated Solutions require an intensive period of preparation & planning before the installation and during the project, it has therefore been decided that projects with Tense Integrated Solutions are subject to project protection.

“Project Protection Integrated Solutions” registration can only be granted by filling out the Project Protection Form and returning it stamped and signed with the general plans, electrical plan and BOQ attached. Upon receipt, you will receive the signed approval to offer the integrated solutions to the project. The date and time of submittal are decisive.

INSTALLATION INSTRUCTIONS:

1. On the desired location, locally **mill down** a **square hole** of **87,5 mm x 87,5 mm** on the backside of the material slab until a **thickness of 5mm** is reached.
2. **Drill LED holes** with a diameter of **2.5 mm** according to the included template. Make sure the holes are in the centre of the square.
3. Install the included **standard orange wallbox** in the round opening of the XILLO® insert. .
4. Pull the KNX bus through the standard orange wallbox.
5. **Remove power** from the KNX bus.
6. **Connect the bus coupler** with the **KNX bus** using the KNX TP1 bus connection terminal.
7. Connect the **red bus wire** to the red terminal (+) and the **black bus wire** to the black terminal(-).
8. **Remove the PCB.**
9. The bus coupler fits in the **standard orange wallbox**. Position by using the included stencil Use two flat headed screws to **fix the bus coupler**. Make sure the mounting is level and that the “TOP ↑” marking on both the BCU and the PCB point upwards.
10. **Re-power** the KNX bus.
11. Press the programming button. Make sure the **red programming LED** lights up.
12. In ETS, add the device and **assign the physical address**.
13. **Program** the physical address. Make sure the red programming LED turns off.
14. **Plug the PCB** onto the bus coupler. Make sure that the “TOP ↑” marking on the PCB points upwards. The LED's will now light for easy installation of the switch.
15. In ETS, select the appropriate parameters and **assign the group addresses**.
16. **Download** the application program to the device.
17. **Assemble the switch and the insert of the Xillo fixture** according to the correct guidelines on the technical data sheet.
18. **Insert** the assembly of step 17 in the **Xillo fixture** plate using the nuts and bolts.
19. **Align the LED's** with the **LED holes** in the wall/panel.
20. **Glue** the outer **XILLO® fixture** to the back of the wall/panel with the correct adhesive. Beware to press/hold it as mentioned on the instructions of the glue (make sure the installation is straight).
21. When the glue has dried completely, unscrew the insert of the XILLO® -fixture plate and take out of it's frame.
22. **Remove the yellow protecting caps** of the diffusers on the PCB. Only the white parts have to be visible.
23. Insert the assembly of step 17 in the Xillo fixture plate using the nuts and bolts. As the wallbox No Gap works with pressure, please note to **NOT** apply glue to the PCB as this will adhere to the front material and make it impossible to remove afterwards.
24. **Tighten the nuts**, but be careful not to over tighten. Over tightening may cause the front material to break over the excessive pressure.

Please contact info@tense.be to get all templates and full instructions regarding Intensity Integrated.