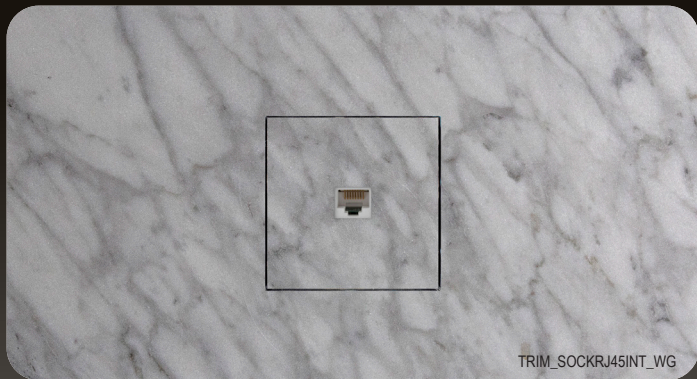


TENSE



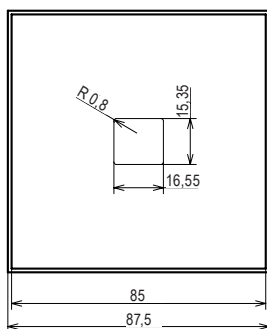
SPECIFICATIONS

Type of protection (EN 60529): **IP20**

RJ45 insert: **Included**

Dimensions in mm (w x h): 1F 85 x 85 mm

Dimensions wallbox: **125 x 125 x 12 mm**



INTEGRATED RJ45 SOCKET WITH GAP

The Integrated RJ45 Socket Wallbox WG is a special wallbox made with the **patented** Xillo® material. This fixture will allow you to have a perfect 100% **integrated** solution for your **RJ45 sockets**.

The Integrated RJ45 Socket Wallbox WG can be made **fully integrated** in the wall finish of your choice while still maintaining the characteristic looks of a Tense socket. Tense provides the innovative wallbox which can be placed behind a **glass, Corian®, stone, ceramic or wooden** wall. The material's cut-out is used in the assembly of the socket to guarantee the pattern running continuously over the switch.

With our Tense wallboxes we offer you an **all-in-one solution**. The fitting and fixture are all combined and made of the solid **patented composite**, so no need for an extra mounting kit. Thanks to the strength of this material, we don't have to work with any metal backplate. The wallbox can be placed without spacers behind any panel with a thickness of 18mm up to 22mm. When thicker panels are used, spacers will need to be installed.

Do not install the Xillo fixture above heating, fire place, airconditioning unit, in direct sunshine, poolhouses, garden pavilions or exterior applications.

Integrated Socket Wallbox With Gap:

TRIM_SOCKRJ45INT_WG

The **Integrated Socket Wallbox With Gap** by Xillo® meets the highest finishing standards and is suitable for all surfaces. The fixture can be installed on any material with a thickness from 18 mm up to 22 mm. Thicker material slabs can be used by installing the included spacers.



TRIM_SOCKRJ45INT_WG

ACCESSORIES

To ensure easy installation of your Intensity or Socket, a **Trimless Kit** (TRIM_KIT) is included with each TRIM_SOCKRJ45INT_WG wallbox. Please do not throw away the Trimless Kit. Save it for the moment you want to uninstall or reinstall the socket!

The trimless kit includes:

REMOVAL CLIPS

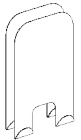
1 x TRIM_KEY (Trimless Key)

To easily **remove the front** plate of the Intensity or Socket, removal clips are available. Just **hook** these **2 clips** behind the switch at both sides and **pull** both clips at the same time.

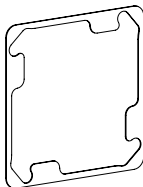
SPACERS

3 x TRIM_SPACER05 (Trimless Spacer 0,5 mm),
1 x TRIM_SPACER2 (Trimless Spacer 2 mm)

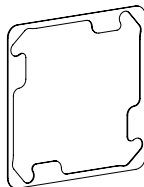
To obtain the **perfect end result** there might be some levelling of the products necessary. Use the spacers to **level** the recessed products with the wall after painting. The **spacers** are placed **behind the BCU**.



REMOVAL CLIPS



SPACER 2 MM



SPACER 0,5 MM

INSTALLATION INSTRUCTIONS:

1. Make a square hole in the panel of 87.5 mm x 87.5 mm on the desired location. The cut-out needs to be a min. of 85 x 85 mm.
2. Keep the cut-out material aside as it will form the finishing plate of your socket.
3. Mill down the cut-out to a thickness of 5 mm and make the center hole of 16,6 x 15,5 mm. Drill from front to back to have the best end result. Make sure to check top and bottom before drilling.
4. Assemble the aluminium socket frame and the finishing plate following the correct guidelines on the technical data sheet.
5. Glue the data insert to the finishing plate.
6. Glue the XILLO® fixture to the back of the wall/panel with the correct adhesive. Beware to press/hold it as mentioned in the instructions of the glue (make sure the installation is straight).
7. Install the included standard orange wallbox in the round opening of the wallbox.
8. Use two flat headed screws to **fix the plastic bracket to the standard orange wallbox**. Make sure the mounting is level.
9. Pull the data cable through the standard orange wallbox & plastic bracket.
10. Connect the data insert with the data cable.
11. **Check the positioning of the front and plug it** onto the plastic bracket with a clear click.

Please contact info@tense.be to get all templates and full instructions regarding the Integrated products.

DISCLAIMER: PROJECT PROTECTION REQUIRED

The Integrated Solutions require an intensive period of preparation & planning before the installation and during the project, it has therefore been decided that projects with Tense Integrated Solutions are subject to project protection.

“Project Protection Integrated Solutions” registration can only be granted by filling out the Project Protection Form and returning it stamped and signed with the general plans, electrical plan and BOQ attached. Upon receipt, you will receive the signed approval to offer the integrated solutions to the project. The date and time of submittal are decisive