

TENSE



TRIM_SOCKETINT1_WG

SPECIFICATIONS

Type of protection (EN 60529): **IP20**

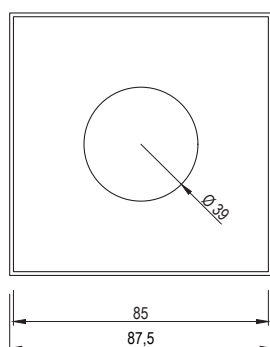
Compatibility: PEHA: Concept 45

Legrand: Mosaic, Arteor, Valena Next

Operating temperatures: +10 °C to +45 °C

Dimensions in mm (w x h): 1F 85 x 85 mm

Dimensions wallbox: **125 x 125 x 12 mm**



Drawing Socket Integrated With Gap front

SOCKET INTEGRATED WALLBOX WITH GAP

The **Socket Integrated Wallbox With Gap (WG)** is Tense's **architectural** approach on Socket Frames. With its **minimalistic** look and slim design it is a true **design** solution.

The Integrated Socket Wallbox WG can be made **fully integrated** in the wall finish of your choice while still maintaining the characteristic looks of a Tense socket. Tense provides the innovative wallbox which can be placed behind a **glass, Corian®, stone, ceramic or wooden** wall. The material's cut-out is used in the assembly of the switch to guarantee the pattern running continuously over the switch.

The Socket frame is available for **any** Standard inserts available in the ranges as mentioned on the left hand side.

The **Socket Integrated WG Wallbox** is a special wallbox made with the **patented Xillo®** material. This fixture will allow you to have a perfect **100% integrated** solution for your **Tense Socket Integrated WG**.

With our Tense wallboxes we offer you an **all-in-one solution**. The fitting and fixture are all combined and made of the solid **patented composite**, so no need for an extra mounting kit. Thanks to the strength of this material, we don't have to work with any metal backplate. The wallbox can be placed without spacers behind any panel with a thickness of 18mm up to 22mm. When thicker panels are used, spacers will need to be installed.

Do not install the Xillo fixture above heating, fire place, airconditioning unit, in direct sunshine, poolhouses, garden pavilions or exterior applications.

Please note that the Socket inserts are not included in this product.

ACCESSORIES

To ensure easy installation of your Intensity or Socket, a **Trimless Kit** (TRIM_KIT) is included with each TRIM SOCKINT_WG wallbox. Please do not throw away the Trimless Kit. Save it for the moment you want to uninstall or reinstall the socket!

The trimless kit includes:

REMOVAL CLIPS

1 x TRIM_KEY (Trimless Key)

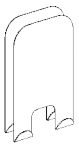
To easily **remove the front** plate of the Intensity or Socket, removal clips are available. Just **hook these 2 clips** behind the switch at both sides and **pull** both clips at the same time.

SPACERS

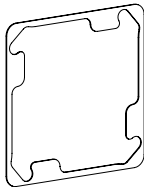
3 x TRIM_SPACER05 (Trimless Spacer 0,5 mm)

1 x TRIM_SPACER2 (Trimless Spacer 2mm)

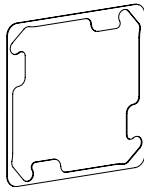
To obtain the **perfect end result** there might be some levelling of the products necessary. Use the spacers to **level** the recessed products with the wall after painting. The **spacers** are placed **behind the BCU**.



REMOVAL CLIPS



SPACER 2 MM



SPACER 0,5 MM

DISCLAIMER: PROJECT PROTECTION REQUIRED

The Integrated Solutions require an intensive period of preparation & planning before the installation and during the project, it has therefor been decided that projects with Tense Integrated Solutions are subject to project protection.

“Project Protection Integrated Solutions” registration can only be granted by filling out the Project Protection Form and returning it stamped and signed with the general plans, electrical plan and BOQ attached. Upon receipt, you will receive the signed approval to offer the integrated solutions to the project. The date and time of submittal are decisive.

INSTALLATION INSTRUCTIONS:

1. Make a square hole in the panel of 87.5 mm x 87.5 mm on the desired location. The cut-out needs to be a min. of 85 x 85 mm.
2. Keep the cut-out material aside as it will form the finishing plate of your socket.
3. Mill down the cut-out to a thickness of 5 mm and drill the center hole with a diameter of 39 mm or the three British plug holes. Drill from front to back to have the best end result. Make sure to check top and bottom before drilling.
4. Assemble the aluminium socket frame and the finishing plate following the correct guidelines on the technical data sheet.
5. Glue the XILLO® fixture to the back of the wall/panel with the correct adhesive. Beware to press/hold it as mentioned in the instructions of the glue (make sure the installation is straight).
6. Install the included standard orange wallbox in the round opening of the wallbox.
7. Remove power from the mains.
8. Pull the mains cable through the standard orange wallbox.
9. Connect the socket with the mains.
10. Click the socket insert in the included plastic bracket.
11. Use two flat headed screws to **fix the plastic bracket to the standard orange wallbox**. Make sure the mounting is level.
12. **Check the positioning of the front and plug it** onto the plastic bracket with a clear click.

Please contact info@tense.be to get all templates and full instructions regarding the Integrated products.