

TENSE



SOCK6MMREA1

SPECIFICATIONS

Type of protection (EN 60529): **IP20**

Compatibility: PEHA: Concept 45

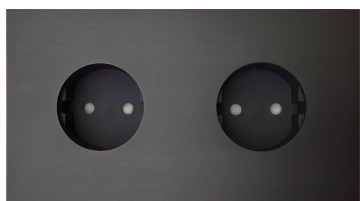
Legrand: Mosaic, Arteur, Valena Next

Dimensions in mm (w x h): 1F 115 x 84 x 6 mm

2F 155 x 84 x 6 mm



SOCK6MMREA1



SOCK6MMRB2

SOCKET FRAME 6MM ROUND ELONGATED

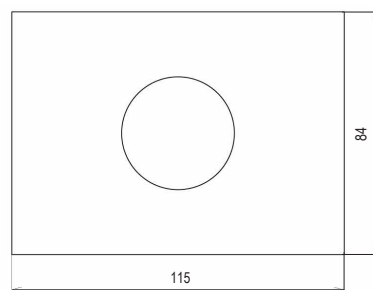
The **Socket Frame 6MM** with round opening is Tense's **architectural** approach on Socket Frames. With its **minimalistic** look and slim design it is a true **design** solution

The Socket frame is available for **German / Belgian / Swiss** Standard inserts. British standard inserts are not compatible with the Socket frame 6MM with round opening.

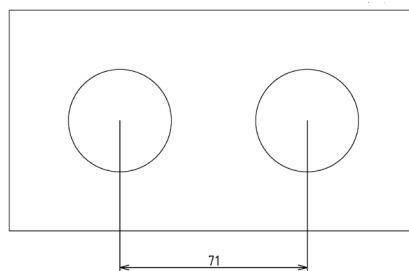
With a thickness of only **6mm** the Socket Frame Stretched 6MM has the same thickness as the metal **Tense Intensity Switch Elongated**. The Socket Frame 6MM with round opening is available in 1F (elongated) & 2F (normal) in all **metal finishes** of the Tense range.

The socket frame 6MM with round opening elongated can be installed on the **Bticino® 503 & 504** (only two fold) wallboxes with special brackets. Please note that **brackets** need to be ordered separately for easy installation of your Intensity Stretched Switch on the **Bticino® 503 or 504** wallboxes.

The socket frame 6MM with round opening stretched can also be installed on a regular **single British or European square or round wallbox**.



Detailed Drawing



Centre-to-centre distance

ACCESSORIES

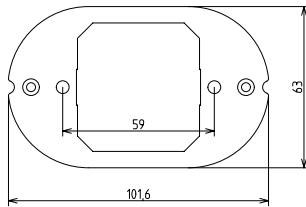
The Tense Socket Frame 6MM Elongated can be installed on a regular **single British or European square or round wallbox or on the Bticino® 503 & 504 wallboxes**. When installed on the Bticino® wallboxes a **bracket** needs to be added to the set-up **for easy assembly**.

Please note that the brackets need to be ordered seperately.

Bracket for BTI-PB503N

BT_SOCKET503N_P

The **BT_SWITCH503N_P** bracket is specially designed to fit the Tense **Socket Frame 6MM Elongated** on the BTI-PB503N wallbox of Bticino® for **plasterboard** walls. The bracket fits seamlessly on the wallbox and is easily installed by screwing it in place with two flat headed screws. The Socket Frame fits snugly in the **designated opening**.

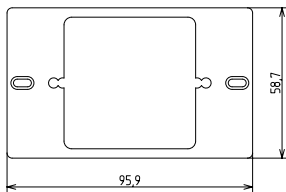


BT_SOCKET503N_P Bracket

Bracket for BTI-503E

BT_SOCKET503E_BC

The **BT_SWITCH503E_BC** bracket fits exactly on the Bticino® **BTI-503E** wallbox for **brick and concrete** walls. The Tense **Socket Frame 6MM Stretched** fits snugly in the **designated opening** on the bracket. Simply install the bracket by screwing it in place with two flat headed screws.



BT_SOCKET503E_BC

Bracket for BTI-504E

BT_SOCKET503E_BC

The **BT_SWITCH504E_BC** bracket fits exactly on the Bticino® **BTI-504E** wallbox for **brick and concrete** walls. The block creates two openings where the BCU's of your socket fit snugly in place.



BT_SOCKET504E_BC

FINISHES

1F available in all metal finishes.

Aluminium:

Alu (brushed)	SOCK6MMRA
Forged Alu	SOCK6MMRFA
Alu Black (brushed)	SOCK6MMRAB
Forged Alu Black	SOCK6MMRFAB
Alu Dark Grey (brushed)	SOCK6MMRADG
Forged Alu Dark Grey	SOCK6MMRFADG
Alu White (RAL 9016)	SOCK6MMRAW
Alu RAL (on request)	SOCK6MMRARAL

Bronze:

Bronze	SOCK6MMRB
Forged Bronze	SOCK6MMRFB
Bronze Light	SOCK6MMRBL
Forged Bronze Light	SOCK6MMRFBL

Metal:

Chrome (polished)	SOCK6MMRCH
Stainless Steel (brushed)	SOCK6MMRSS
Forged Stainless Steel	SOCK6MMRFSS
Forged Steel	SOCK6MMRFS
Brushed Gold	SOCK6MMRBG
Forged Gold	SOCK6MMRFG
Brushed Copper Rose	SOCK6MMRBCR
Forged Copper Rose	SOCK6MMRFRCR

CUSTOMIZATIONS:

Would you like to **personalize** your **products** permanently with inscriptions, logos and/or symbols? All Tense finishes are suitable for these customizations. **Engraving, printing, lasering...** are some of the available options.

See our **Customizations data sheet** for further explanation.