

# TENSE



TRIM\_SOCKET1\_NG

## SPECIFICATIONS

Type of protection (EN 60529): **IP20**

Compatibility: PEHA: Concept 45

Legrand: Mosaic

Legrand: Arteor

Operating temperatures: +10 °C to +45 °C

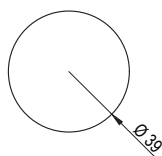
Dimensions in mm (w x h): 1F Ø 39 mm

Dimensions wallbox: **125 x 125 x 21 mm**



TRIM\_SOCKET1\_NG

TRIM\_SOCKET1\_NG



Drawing Socket Integrated With Gap front

## SOCKET INTEGRATED WALLBOX NO GAP

The **Socket Integrated Wallbox No Gap (NG)** is a **special wallbox made with the patented Xillo® material**. It allows you to have a **perfect 100% integrated solution for your Tense socket**. With its **minimalistic approach** and slim look it is a true **design solution**.

The Integrated Socket Wallbox NG can be made fully **integrated** in the wall finish of your choice while still maintaining the characteristic looks of a Tense socket. Tense provides the innovative wallbox which can be placed behind a **glass, Corian®, stone, ceramic or wooden wall**.

The Socket Integrated Wallbox NG is available for **any** Standard inserts, available in the ranges as mentioned on the left hand side.

With our Tense wallboxes we offer you an **all-in-one solution**. The fitting and fixture are all combined and made of the solid **patented composite**, so no need for an extra mounting kit. Thanks to the **strength** of this **material**, we don't have to work with any metal backplate. The wallbox can be placed without spacers behind any panel with a thickness of **18mm up to 22mm**. When thicker panels are used, spacers will need to be installed.

Do not install the Xillo fixture above heating, fire place, airconditioning unit or in direct sunshine.

Please note that the Socket inserts are not included in this product.

## ACCESSORIES

To ensure easy installation of your Intensity or Socket, a **Trimless Kit** (TRIM\_KIT) is included with each TRIM\_SOCKETING wallbox. Please do not throw away the Trimless Kit. Save it for the moment you want to uninstall or reinstall the socket!

The trimless kit includes:

### REMOVAL CLIPS

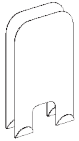
1 x TRIM\_KEY (Trimless Key)

To easily **remove the front plate** of the Intensity or Socket, removal clips are available. Just **hook these 2 clips** behind the switch at both sides and **pull** both clips at the same time.

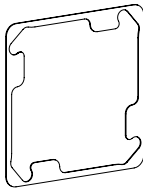
### SPACERS

1 x TRIM\_SPACER2 (Trimless Spacer 2 mm)  
3 x TRIM\_SPACER05 (Trimless Spacer 0,5 mm),

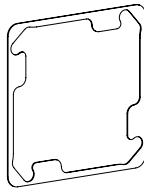
To obtain the **perfect end result** there might be some levelling of the products necessary. Use the spacers to **level** the recessed products with the wall after painting. The **spacers** are placed **behind the BCU**.



REMOVAL CLIPS



SPACER 2 MM



SPACER 0,5 MM

## INSTALLATION INSTRUCTIONS:

1. On the backside of the desired location, **mill down a square hole** of **87,5 mm x 87,5 mm** until a **thickness of 5mm** is reached.
2. **Drill the socket hole(s)** with a diameter of 39 mm or drill the three British plug holes. Drill from front to back to have the best end result. Make sure the holes are in the center of the milled out square.
3. Install the included **standard orange wallbox** in the round opening of the XILLO® insert. .
4. **Remove power** from the mains.
5. Pull the mains cable through the standard orange wallbox.
6. Connect the **socket** with the **mains**.
7. **Click the socket insert** in the included plastic bracket.
8. Use two flat headed screws to **fix the plastic bracket** to the standard orange wallbox. Make sure the mounting is level.
9. Push the **aluminium frontplate** with a clear **click** onto the XILLO® insert-assembly.
10. Insert the assembly of step 9 in the XILLO® fixture plate.
11. **Align** the total assembly with the socket holes in the wall/panel.
12. Using the nuts and bolts, **screw the XILLO® insert** slightly fix.
13. **Glue the outer XILLO® fixture** to the back of the wall/panel with the correct adhesive. Beware to press/hold it as mentioned in the instructions of the glue (make sure the installation is straight).
14. When the glue has dried completely, **tighten the nuts**, so the socket presses nicely against the socket opening. Be careful not to over-tighten, since over-tightening may cause the front material to break over excessive pressure.
15. **Re-power the mains**

Please contact [info@tense.be](mailto:info@tense.be) to get all templates and full instructions regarding the Integrated products.